

► **TECHNICAL SPECIFICATIONS**

Product model	QminiA5	QminiA7	
Positioning Technology	AGPS spiral antenna: Support GPS, BDS, GLONASS, SBAS Dual constellation system: GPS/GLONASS or GPS/Beidou	AGPS spiral antenna: Support GPS, BDS, GLONASS, SBAS Dual constellation system: GPS/GLONASS or GPS/Beidou	
GNSS Feature	Time to First Fix	20 seconds (typical)	●
	Single Point Positioning	3-5m	●
	SBAS	1-3m	●
	Network RTK	≤0.5m (RTD only)	≤0.2m
	Update Rate	1-5Hz	●
System	Operating System	Android 6.0	●
	Processor	2.0GHz, 8 core high speed processor	●
Configuration	Storage	RAM 3GB, ROM 32GB, T-Flash Card 128GB	●
	Display	5.5 inches glare resistant, touchable screen	●
	Resolution	1920×1080, under the sun	●
	Camera	13M Pixels camera, auto focus, highlight LED flash	●
Data Communication	Network Type	Support 4G TD-LTE,FDD-LTE, TD-SCDMA, CDMA (EVDO,2000) WCDMA, GSM (GPRS)	●
	WIFI	IEEE 802.11b/g/n, AP, Wapi	●
	Bluetooth	Bluetooth 4.0, BLE	●
	USB	TypeC, OTG function	●
	Capacity	3.7V, 5500mAh	●
Battery Feature	Working Time	10-12 hours	●
	R Module Scan	QR code, RFID/NFC,	●
Applications	Build-in Sensor	G-Sensor, electronic compass, barometer	●
	Size	165mm*85mm*18mm	●
Physical Characteristics	Weight	320g (with battery)	●
	Working Temperature	-40°C ~ +85°C	●
	Storage Temperature	-50°C ~ +85°C	●
	Dustproof and Waterproof	IP67, anti 1.5m free drop	●



AUTHORIZED DISTRIBUTION PARTNER

Hi-Target Surveying Instrument Co., Ltd.

Address: Building 13, Tian'An Technology Zone, No. 555, Panyu North Rd., Panyu District, Guangzhou, China (511400)
TEL: +86-20-2288 3944 E-mail: info@hi-target.com.cn www.hi-target.com.cn

Qmini A5/A7
High-precision GIS Handheld



CE IP67

▶ Qmini A5/A7 Designed for GIS

The Hi-Target QminiA5/A7 handheld is aimed at professionals in the GIS industry who want full-functionality and compactness in the style of an easy-to-hold and operate android-phone. A5/A7 features a spiral antenna and Hi-Target GNSS RTK algorithm to provide high-precision operation. Utilising the mobile GIS software collection suite, the A5/A7 can provide a multitude of GIS operations including land and water resource inspection, pipeline and utilities inspection, environmental and other public work applications.



▶ Key Features



Android 6.0 OS 2.0GHz 8 core high speed processor



Professional RTK engine



An open platform for 3rd party software

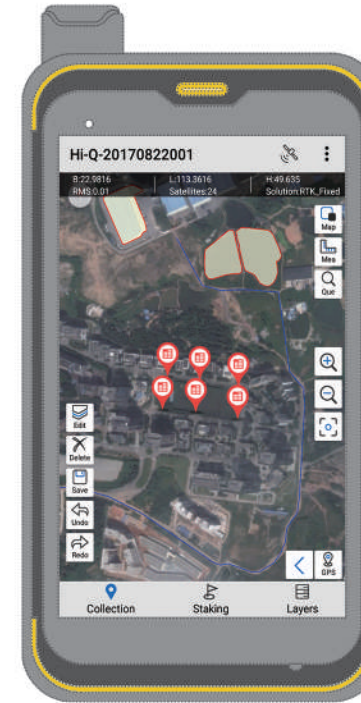


5500mAh battery providing up to 12 hours continuous operation



Protection for 1.5m drop to ground to IP67 standards

▶ Lite Version



Hi-Q field collection software

- Customised functions
- Online Google Map
- Multiple collection mode

▶ Professional Version



Hi-Q Pro field collection software

- PPK function
- Customized coordinate system
- Customized data dictionary

▶ Typical Industry Applications



• Resource Management

Resource management like Land management , water resources survey, forest inventory



• Utilities

Utilities like electricity inspection, gas pipe network inspection



• Smart City

Smart city like transportation management and smart navigation