

► TECHNICAL SPECIFICATIONS

Product model		QminiA5	QminiA7
GNSS Feature	Positioning Technology	AGPS spiral antenna: Support GPS, BDS, GLONASS, SBAS Dual constellation system: GPS/GLONASS or GPS/Beidou	AGPS spiral antenna: Support GPS, BDS, GLONASS, SBAS Dual constellation system: GPS/GLONASS or GPS/Beidou
	Time to First Fix	20 seconds (typical)	●
	Single Point Positioning	3-5m	●
	SBAS	1-3m	●
	Network RTK	≤0.5m ( RTD only )	≤0.2m
	Update Rate	1-5Hz	●
System	Operating System	Android 6.0	●
Configuration	Processor	2.0GHz, 8 core high speed processor	●
	Storage	RAM 3GB, ROM 32GB, T-Flash Card 128GB	●
	Display	5.5 inches glare resistant, touchable screen	●
	Resolution	1920×1080, under the sun	●
	Camera	13M Pixels camera, auto focus, highlight LED flash	●
Data Communication	Network Type	Support 4G TD-LTE,FDD-LTE, TD-SCDMA, CDMA ( EVDO,2000 ) WCDMA, GSM ( GPRS )	●
	WIFI	IEEE 802.11b/g/n, AP, Wapi	●
	Bluetooth	Bluetooth 4.0, BLE	●
	USB	TypeC, OTG function	●
Battery Feature	Capacity	3.7V, 5500mAh	●
	Working Time	10-12 hours	●
Applications	R Module Scan	QR code, RFID/NFC,	●
	Build-in Sensor	G-Sensor, electronic compass, barometer	●
Physical Characteristics	Size	165mm*85mm*18mm	●
	Weight	320g (with battery)	●
	Working Temperature	-40℃ ~ +85℃	●
	Storage Temperature	-50℃ ~ +85℃	●
	Dustproof and Waterproof	IP67, anti 1.5m free drop	●



Website

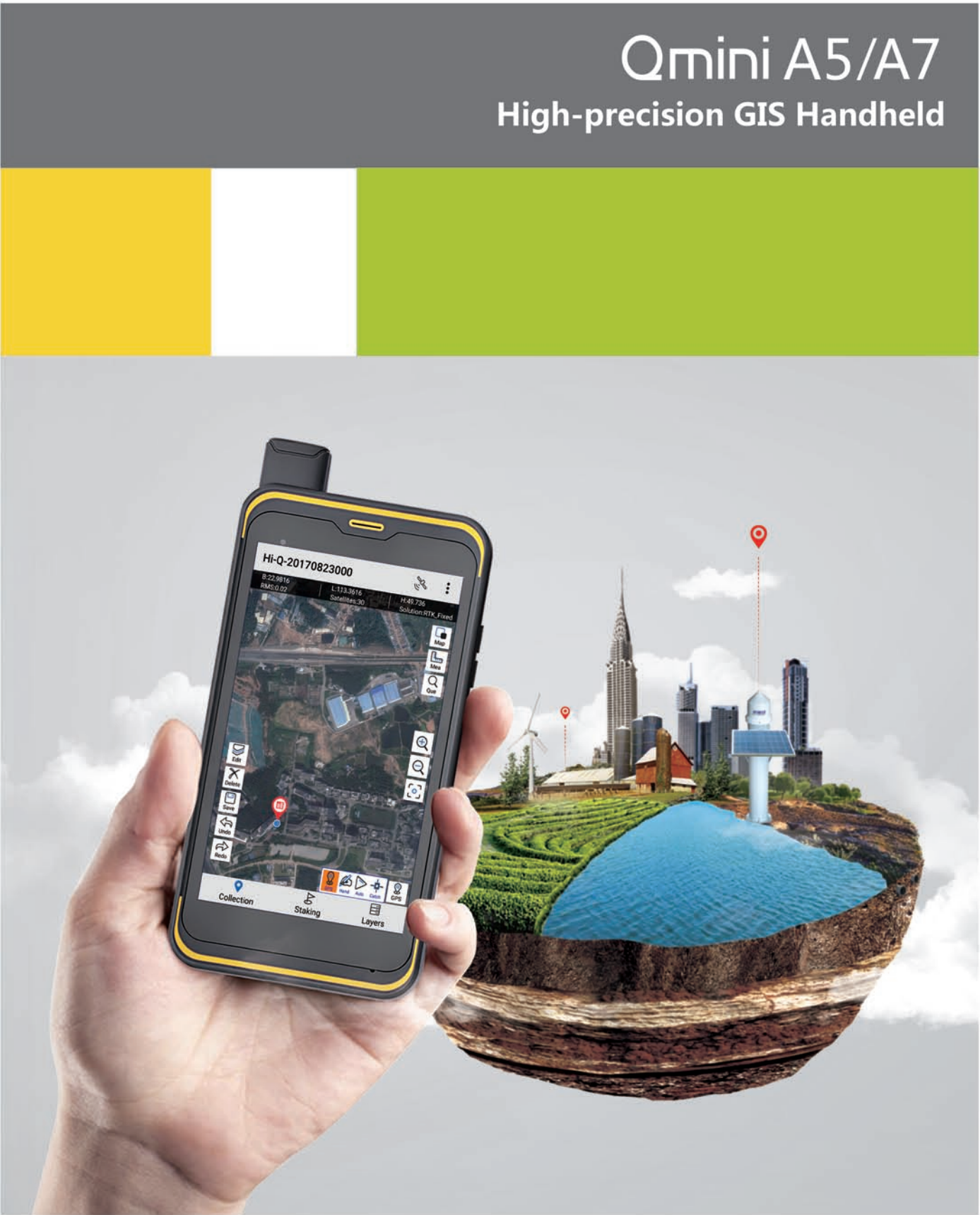


Facebook

AUTHORIZED DISTRIBUTION PARTNER

Hi-Target Surveying Instrument Co., Ltd.

Address: Building 13, Tian'An Technology Zone, No. 555, Panyu North Rd., Panyu District, Guangzhou, China (511400)  
 TEL: +86-20-2288 3944 E-mail: info@hi-target.com.cn www.hi-target.com.cn



CE
 
 IP67



## ▶ Qmini A5/A7 Designed for GIS

The Hi-Target QminiA5/A7 handheld is aimed at professionals in the GIS industry who want full-functionality and compactness in the style of an easy-to-hold and operate android-phone. A5/A7 features a spiral antenna and Hi-Target GNSS RTK algorithm to provide high-precision operation. Utilising the mobile GIS software collection suite, the A5/A7 can provide a multitude of GIS operations including land and water resource inspection, pipeline and utilities inspection, environmental and other public work applications.



## ▶ Key Features



➤ Android 6.0 OS 2.0GHz 8 core high speed processor



➤ Professional RTK engine



➤ An open platform for 3rd party software

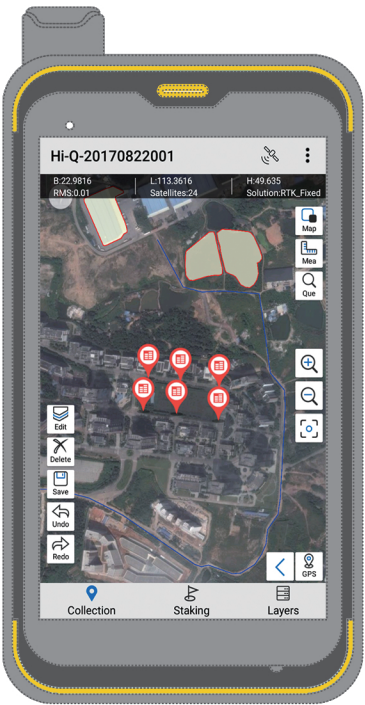


➤ 5500mAh battery providing up to 12 hours continuous operation



➤ Protection for 1.5m drop to ground to IP67 standards

## ▶ Lite Version



### Hi-Q field collection software

- Customised functions
- Online Google Map
- Multiple collection mode

## ▶ Professional Version



### Hi-Q Pro field collection software

- PPK function
- Customized coordinate system
- Customized data dictionary

## ▶ Typical Industry Applications



### • Resource Management

Resource management like Land management , water resources survey, forest inventory



### • Utilities

Utilities like electricity inspection, gas pipe network inspection



### • Smart City

Smart city like transportation management and smart navigation